



Student Notices

Week Beginning;
6th January 2025

Week B





Prayerful intentions this week...

As well as your own private intentions, our community intention for prayer at the beginning of lessons is for...

We pray that the Holy Spirit may help us to recognise the gift of different charisms within the Christian community, and to discover the richness of the different rites within our community.



“There are many different gifts, but it is always the same Spirit; there are many different ways of serving, but it is always the same Lord. There are many different forms of activity, but in everybody it is the same God who is at work in them all.”

1 Corinthians 12: 4-6



Feast of the Epiphany took place on Monday 6th January

'Epiphany' comes from the Greek word meaning 'to reveal', as it is when the baby Jesus was 'revealed' to the world.



"We saw his star in the east and have come to worship him"

Matthew 2:2



Prayer

Lord, as we begin a new term with new members of our community
Help each of us make a new beginning this week.

Here among us we have so much wisdom and energy,
so much experience and optimism to take each other forward.

Remind us often that you are really with us as we work together,
not just as an idea in our heads but as a living presence among us.

May your presence, your spirit, your RUAH
be with us as we breathe life and hope into our community through our many talents
and may Don Bosco continue to inspire each of us
to make holiness consist in being cheerful this year.

We ask this through Christ Our Lord.

Amen

St Michael – Pray for Us

All the Angels and Saints – Pray for Us

Assemblies this week

Theme: Year of the Jubilee; Epiphany of the Lord

Catholic Social Teaching Links: The Common Good, Solidarity

Tuesday PM – Year 10

Wednesday AM – Year 8 and Year 9

Wednesday PM – Year 11 Mock Results Assembly

Thursday AM – Year 7 and Year 12

Friday AM – Year 13 Mock Results Assembly



Truth, by which the world is held together, has sprung from the earth, in order to be carried in a woman's arms.

- St Augustine



Prayer at St. Michael's Catholic College

Prayer and reflection is an important part of our day at St. Michael's Catholic College

We encourage students to lead prayer during morning and afternoon registration and the beginning of lessons

Each tutor group should have a prayer table for which the House Captain is responsible for looking after – on which should sit the form class prayer book and other Holy/significant objects

Students can also write their own prayer and submit for the weekly student notices – email Mr Kelly with your prayer submission by Friday of each week





Prayer Tables

As the season of Advent has finished, prayer tables should now be switched back to their green cloth

The season of Lent begins on Wednesday 5th March with Ash Wednesday which will be the next time your purple cloth will be needed



Salesian Values of RUAH at St Michael's Catholic College

RUAH: RESPECT, UNDERSTANDING, AFFECTION and HUMOUR



| | |
|--|---|
|  RESPECT | <p>Recognising that each life is sacred, we are all made in the image and likeness of God and should be treated with respect.</p> |
|  UNDERSTANDING | <p>We are all on a journey through life and sometimes this means making mistakes so that we can learn from them and change our behaviour.</p> |
|  AFFECTION | <p>By building strong and positive relationships with those around us we can help each other to grow.</p> |
|  HUMOUR | <p>By being happy and laughing with those around us we are able to celebrate life and encourage each other.</p> |





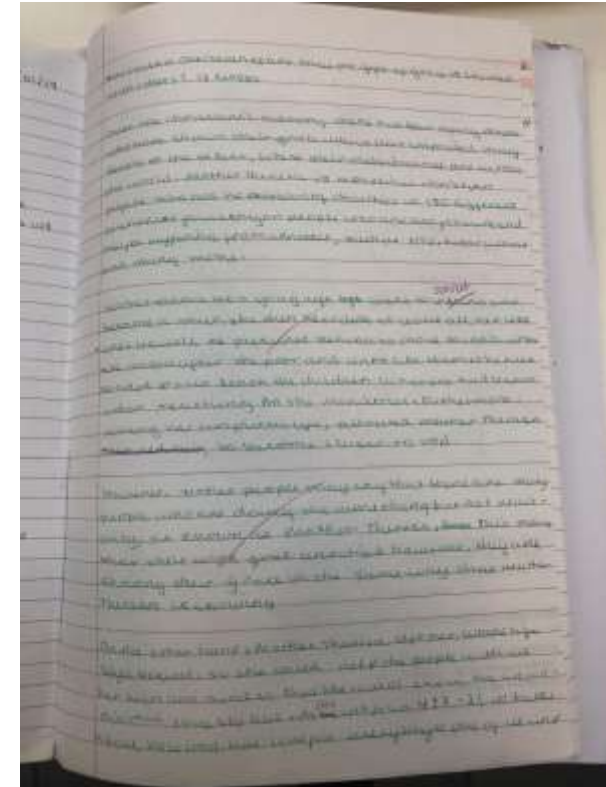
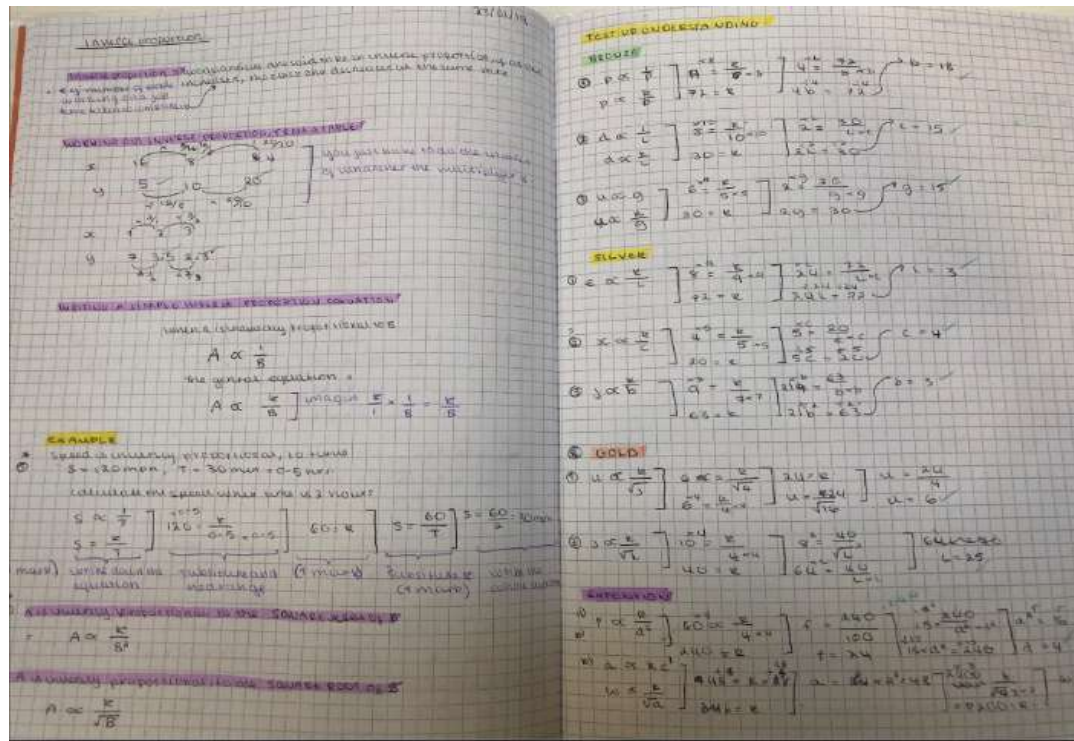
RUAH Values: **U**nderstanding



Understanding the Importance of your education by taking pride in your work.

You can demonstrate this by having well organised books which show consistently high effort.

This helps your learning and supports your revision.



What do your books say about your attitude to learning? Are they well organised?
Are all sheets stuck in /treasury tagged? Will they help you to learn and revise?



Safeguarding at St. Michael's Catholic College



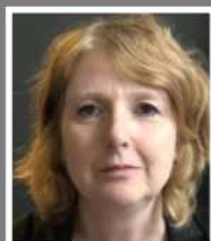
Safeguarding Officers



Designated Safeguarding Lead:

Ms Jo Nottage

Contact: 0207 237 6432 or
j.nottage@stmichaelscollege.org.uk



Safeguarding officer & Deputy Designated Lead:

Mrs Debbie Freegard

Contact: 0207 237 6432 or
d.freegard@stmichaelscollege.org.uk



Ms Tania Rughooputh

Contact: 0207 237 6432 or
t.rughooputh@stmichaelscollege.org.uk



Mr Allan Daly

Contact: 0207 237 6432 or
a.daly@stmichaelscollege.org.uk

Safeguarding Officer:

Overall Responsibility:

Ms Felicity Corcoran - Principal

Contact: 0207 237 6432 or
Email: contact@stmichaelscollege.org.uk

You can also report safeguarding incidents via the school website using the SHARP system on the student portal

Travelling to and from College



You must travel straight home after school has finished – there should be no hanging around the local area as residents complain about the noise.

You should be wearing your full school uniform properly as you travel to and from school – including ties and shirts tucked in.

The back school gates will be open from 8.30am each morning and you should come on to the school site and go to your line up area to wait.

If you are coming in for a morning club then arrive through the main reception no later than **8.15am**.



Prohibited items

Contraband items that should not be brought into college:

- Alcohol
- Tobacco products, e.g. cigarettes & vapes
- Bangers
- Stink bombs
- Fireworks (would be reported to the police, may result in PEX)

Bringing any of above in will result in an APB placement or Fixed term exclusion.

Reminder...chewing gum and metal combs are also not allowed, if found in your possession, you will have a Saturday detention.

Prohibited items that should not be brought into the college:

- Drugs, e.g. cannabis
- Knives/ bladed item
- Imitation firearms, e.g. BB gun
- Firearms
- Any other type of weapon

Bringing any of the above in will result in a **Permanent exclusion** (PEX) and the Police will be involved.



Make sure you know what you are buying, unfortunately 'Edibles' which contain drugs like cannabis look very much like normal sweet packets.



Classroom Expectations



In every lesson, all pupils should meet the following expectations:

- Arrive on time, move quickly and quietly to your next lesson
- Arrive with correct uniform
- Arrive with all necessary equipment
- Arrive with completed homework
- Follow all teacher instructions in a timely fashion
- Apply yourself fully to all tasks throughout including completion of any challenge tasks
- Work with others in a collaborative manner.



When you meet and exceed these expectations you will be rewarded in various ways;

Verbal praise

Written praise (in book/journal)

SIMS individual achievement points

Positive phone call home.

If you fail to meet any of the lesson expectations, your teacher will carry out the steps below;

- 1) Two warnings
- 2) Minor mention
- 3) Major mention on SIMS
- 4) Removal to HOD/Dept – this may result in Saturday detention
- 5) SLT called – this will result in removal to the Alternative Provision Base (APB).



Punctuality reminder:

Students are expected to be in the College playground by **8.40am**. If a student arrives at the College gate at **8.41 or later** then they will be deemed as arriving late, this will have the following implications:

| | |
|---|---|
| 1-2 late/s to college in a week | Whole college detention |
| 3 lates in a week or in a half term | 1-hour Saturday detention |
| 4 - 9 lates in a half term | Next day morning detention, 8 – 8.30. If the student fails to turn up on time they will be in the APB for the day, finishing at 4.30 and parents will have to virtually meet with L/L |
| 10 lates in a half term | 1 day in the APB L/L to meet with parent (face-to-face) |
| 15 lates in a half term/ year | 2 days in the APB SLT to meet with parents May result in a referral to LA |
| 20+ lates in a half term/ year | Will result in a referral to LA and may result in further sanctions such as a FTE. |

Phone calls from parents/carers regarding lateness due to traffic etc. does not mean that you will not receive a mention and detention.



Saturday Detention Expectations

If you have been issued a Saturday detention, the expectations are outlined below;

- Saturday detentions take place in the school library
- You should be in correct - full school uniform - if not you will be asked to repeat the detention in uniform the following week
- You should arrive on time - if you arrive 5 minutes or more late then your detention will be rescheduled for the next week and parents informed
- You must bring with you work to complete - either chromebook or paper-based work. You will not be permitted to get your chromebook the morning of the detention so must have this with you.

Saturday Detention Times;

Year 11 - 8.30am-9.30am (then attend study session in full school uniform)

Year 10 and Year 9 - 9.30am-10.30am

Year 8/7 - 10.30am-11.30am

Year 12/13 – 10.30am - 11.30am



Public Examinations



Year 13 Internal Mock Exam Time-table - Week Commencing Monday 8 – Friday 19 January 2024

AM START: 09.00
PM START 13.15

| Monday 6 January | Tuesday 7 January | Wednesday 8 January | Thursday 9 January | Friday 10 January |
|-------------------------|--------------------------|---|---|--------------------------|
| AM | AM | AM | AM | AM |
| NO EXAMS | NO EXAMS | NO EXAMS | 09.00-10.30 CTEC Sport Unit 1 Body Systems & Effect of Human Activity 1hr30mins | NO EXAMS |
| PM | PM | PM | PM | PM |
| NO EXAMS | NO EXAMS | 13.15-14.45 CNAT Creative i-Media R093 Media Industry 1hr30mins 6Yr11 | NO EXAMS | NO EXAMS |

Week Commencing Monday 4 - Tuesday 12 December 2023 – Internal Exam Timetable

| Monday 13 January | Tuesday 14 January | Wednesday 15 January | Thursday 16 January | Friday 17 January |
|--|---------------------------|--|---|---|
| AM | AM | AM | AM | AM |
| 09.00-10.30 CTEC Business Unit 3 Business Decision 1hr30mins | NO EXAMS | NO EXAMS | NO EXAMS | NO EXAMS |
| NO EXAMS | NO EXAMS | 13.15-14.45 CTEC Sport Unit4 Working Safely in Sport 1hr30mins | 13.15-15.15 CTEC Business Unit 9 Human Resources 2hrs | 13.15-15.15 CTEC Business Unit 10 Economics for Business 2hrs |



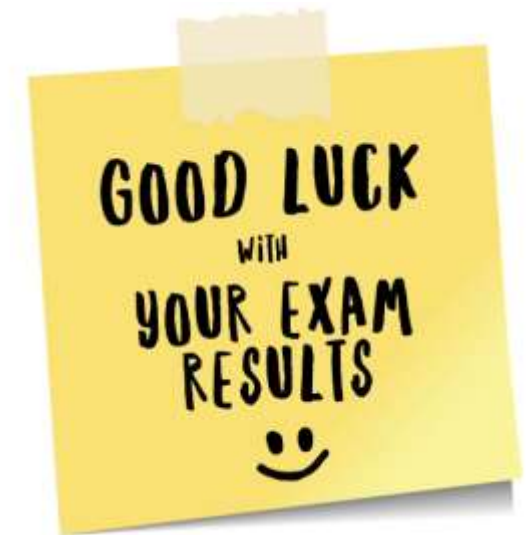
Mock Results!

Year 11 will receive the results of their mock exams from Nov/Dec on Wednesday 8th Jan during assembly in the afternoon

Year 13 will receive the results of their mock exams from Nov/Dec on Friday 10th Jan during assembly in the morning



Good Luck to all involved!





Year 11 Parents' Evening

Year 11 students are reminded that they should attend with their parents the annual Parents evening on Thursday 9th Jan from 4pm

Parents' evening will be in person and take place in the main hall and canteen area. Please ensure your parents have signed up to meet with each of your subject teachers.





6th Form Application Deadline for Year 11

Friday 10th January 2025

Make sure you have completed your application for the St Michael's 6th Form (even if you think you may go somewhere else)

Those who apply after this deadline may not be considered for a place in the St Michael's Catholic College 6th Form for September 2025





Year 11 Morning Mocks!

The next morning mock for Year 11 students will be on Tuesday 14th Jan at 8am in English

Please make sure you are at school for 7.45am!





My Future Self Workshop

Year 10 – Friday 10th Jan – Period 1 and 2

The below 30 Year 10 girls will be involved in the My Future Self workshop this year with the first meeting taking place Period 1 and 2 on Friday 10th Jan.

| | | | | | | | | | | | |
|-----------|------|----------|------|------------------|------|----------|------|----------------|------|-------------|------|
| Nicole C | 10BC | Alana F | 10DA | Oceane A | 10MA | Sofija I | 10RU | Donella S | 10SA | Lexi B | 10VI |
| Janet K | 10BC | Delina G | 10DA | <u>Torilee A</u> | 10MA | Favour O | 10RU | Jennifer BD | 10SA | Ersida D | 10VI |
| Armanda P | 10BC | Osato IK | 10DA | Samuela S | 10MA | Favour I | 10RU | Chloe C | 10SA | Catherine K | 10VI |
| Monika J | 10BC | Claire O | 10DA | Martha K | 10MA | | | <u>Saron G</u> | 10SA | Kitty W | 10VI |
| | | | | Olive N | 10MA | | | Monika K | 10SA | | |
| | | | | Hannah S | 10MA | | | Michal Y | 10SA | | |
| | | | | Munachi A | 10MA | | | Michelle L | 10SA | | |
| | | | | | | | | Rachel S | 10SA | | |



...

ST MICHAEL'S BASKETBALL TEAMS

**WE HAVE BEEN ENTERED
INTO A LEAGUES FOR BOYS
AND GIRLS IN YEAR 7-10**

**IF YOU WANT TO PLAY
SPEAK TO MR LARIBI**

...



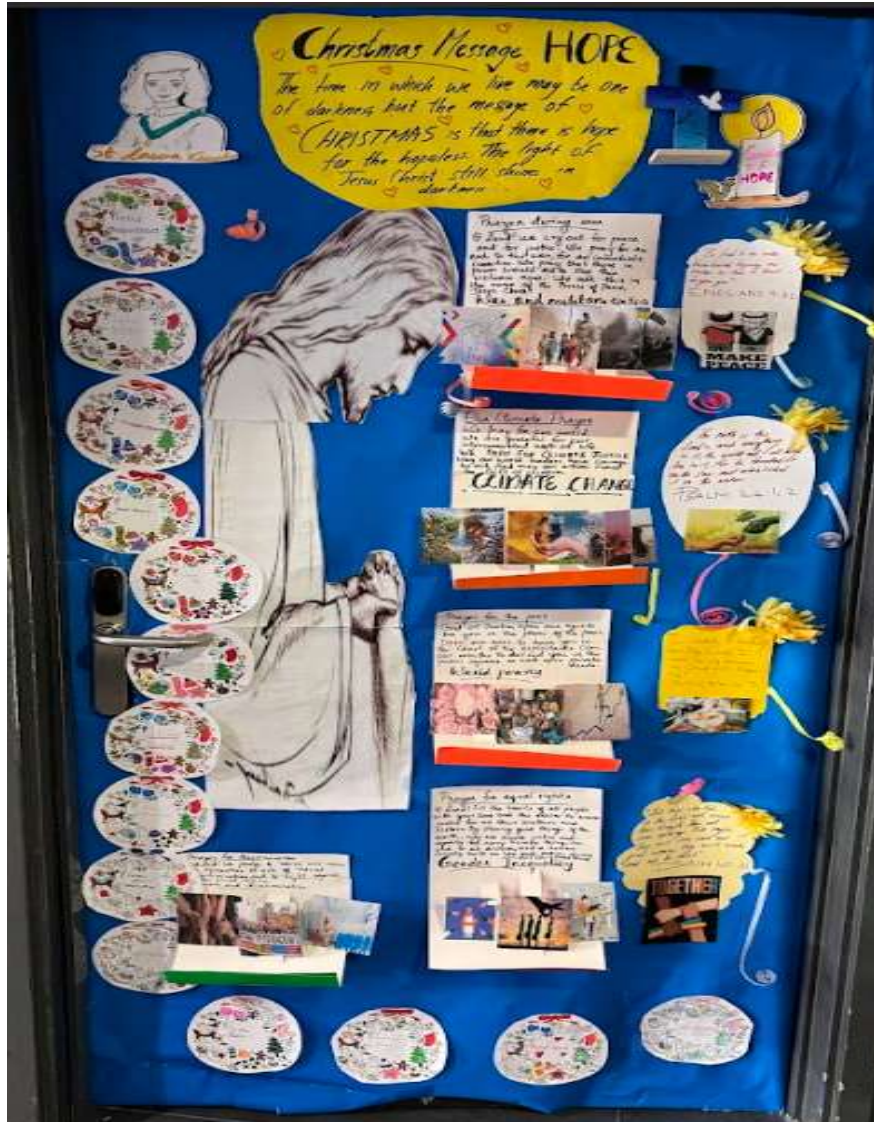


Pasta Nativity Competition Winner 8MA!





Christmas Doors Competition Winners!





Brilliant Club



The Brilliant Club



Group A

Janka P
Ivan G
Scarlett M
Mia A
Lola B
Natalie TC
Elizabeth R

Group B

Martha W
Ariam G
Stanley S
Isabella MO
Michelle O
Le-Siree A
Ambra P

~~Wednesday 23rd October, Group A - 09:00 (Period 1) F26, Group B - 10:00 (Period 2) F26~~

~~Thursday 7th November, Group A - 13:15 (Period 4b) F04, Group B - 14:15 (Period 5) F28~~

~~Friday 15th November, Group A - 09:00 (Period 1), Group B (period 5)~~

~~Tuesday 19th November, Group A - 13:15 (Period 4b) NF6, Group B - 14:15 (Period 5) NF7~~

~~Thursday 28th November, Group A - 09:00 (Period 1) F06, Group B - 10:00 (Period 2) F28~~

Thursday 9th January, Group A + B - 13:15-15:15 (Period 4b + 5) - timings + rooms to be confirmed 10 minutes for each pupil - Feedback on draft assignment

Wednesday 29th January 2025, Group A + B - 09:00-11:00 (Period 1 + 2), timings + rooms to be confirmed 10 minutes for each pupil – Feedback on final assignment followed by additional 10 minutes for pupils to complete online post-programme survey



Black History Month Competition Display!

Check out the Black History Month Competition display located by the library!



Use the link to access the digital version of a special edition of the St Michael's Review on Black History Month with lots of digital pieces of work!
https://docs.google.com/presentation/d/1TLoZzOLUuoehN5DrItgblxWd8-QwlejCAtm9Y4qv0Vo/edit#slide=id.g31d9164931e_2_79





Clubs/Societies Timetable



| Time | Monday | Tuesday | Wednesday | Thursday | Friday |
|------------------------------------|--|---|--|---|---|
| 8-8.30am | Yr7-13 - Breakfast Club - Main Canteen | Yr7-13 - Breakfast Club - Main Canteen | Yr7-13 - Breakfast Club - Main Canteen | Yr7-13 - Breakfast Club - Main Canteen | Yr7-13 - Breakfast Club - Main Canteen |
| | KS3 - Homework Club - G20 | KS3 - Homework Club - G20 | KS3 - Homework Club - G20 | KS3 - Homework Club - G20 | All Yr's - Mass - Chapel |
| | KS4 - Football - Astro | All Yr's - Girls Basketball - Sports Hall | | Yr8-13 - Choir - F22 | KS3 - Homework Club - G20 |
| 8.30-9am | | | | | All Yr's Student Council (every 2 weeks) |
| Lunch 4a (12.45-1.15pm) | Yr7 - Global Scholars - TBC | KS3 - Games Club - G18 | Yr9 - Music Band - F23 | KS3 - Junior Band - F23 | Yr8 - Choir - F23 |
| | KS3 - Spanish Film Club - NS5 | Yr7 - Ukulele club - F22 | Yr7 - Choir - F23 | KS3 - Basketball - Sports Hall | KS3 - Samba Band - F22 |
| | KS3 - String Group - F23 | KS3 - Dodgeball - Sports Hall | KS3 - Debate Society - S21 | | KS3 - Girls Get Active - Sports Hall |
| | Yr7 - Keyboard club - F22 | KS3 - Girls Futsal - Sports Hall | KS3 - Table tennis - Sports Hall | | |
| | KS3 - Running Club - Changing rooms | | KS3 - Badminton - Sports Hall | | |
| Lunch 4b (1.45-2.15pm) | KS4+5 - Found in Translation - NS3 | KS4/5 - Senior Winds - F23 | KS4/5 - Guitar Group - F22 | Yr10 - Music Band - F23 | KS4/5 - Wind Band - F22 |
| | Yr11 - Football - Astro | 6th Form - Basketball - Basketball Ct | Yr10 - Football - Astro | KS4 - GCSE Music Singers - F23 | Yr11 - Football - Astro |
| | 6th Form - Basketball - Basketball Ct | | 6th Form - Basketball - Basketball Ct | KS4 - SEND Games Club - G18 | 6th Form - Basketball - Basketball Ct |
| 3.30-4.30pm | Yr10 - GCSE Music Club - F22 | KS3 - Maths Sparx HW Club - G19 | Yr8/9 - Football - Astro | All Yr's - History Society - S09 | All Yr's - Maths Problem Solving - S08 |
| | KS4/5 - Girls Basketball - Sports Hall | KS3 - DT Club - G51 | KS4 - Table Tennis - Sports Hall | 6th Form - Debating Club - S22 | Yr11 - GCSE Music Club - F22 |
| | KS3 - Trampolineing - Sports Hall | Yr7+8 - Science Club - S36 | | 6th Form - Aspiring Medics + Dentists - G52 | 6th Form - Sports (Various) - Sports Hall |
| | KS3/4 - STEM Club - G18 | Yr9+10 - F1 in Schools - S37 | | KS3 - Christmas Show - G18 | |
| | KS3/4 - Girls who Code - G19 | KS3/4 - Brass Group - F23 | | KS4/5 - Basketball - Sports Hall | |
| | | Yr7 - Football - Astro | | KS3 - Gardening - Meet Library | |
| | KS3 - Badminton - Sports Hall | | All Yr's - Maranatha Choir - F23 | | |



WISH YOU DID MORE PRACTICALS IN
SCIENCE? COME AND JOIN US!

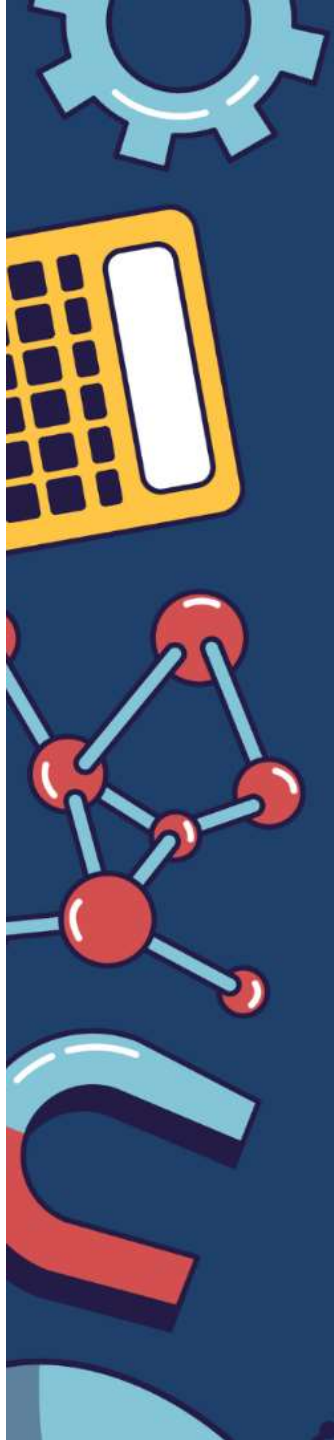
SCIENCE CLUB

Tuesdays after school 15:30 - 16:30

S36 years 7-8

If you would like to be part of science club this term, you must come within the first two weeks, to ensure you hear important safety information. Anyone who starts after this time may not be allowed to take part.

15 spaces only - first come first served



Massive thank you to year 7,8 + 9 students attending River Running club this term



Regular attenders

Laura D

Adrian R

Alexabndra A

Deandre V

Conor G

Julia G

Sebastian H

olimpia J

Ariana J

Dagmara K

Greta M

Michael O

Janka P

Robyn S

If you want to join the running club you need to have signed the online permission form and see Mrs Weatherley to add your name to list or you will not be allowed off site.

BE HEARD



!NEW!



Y10 Debate and MUN club

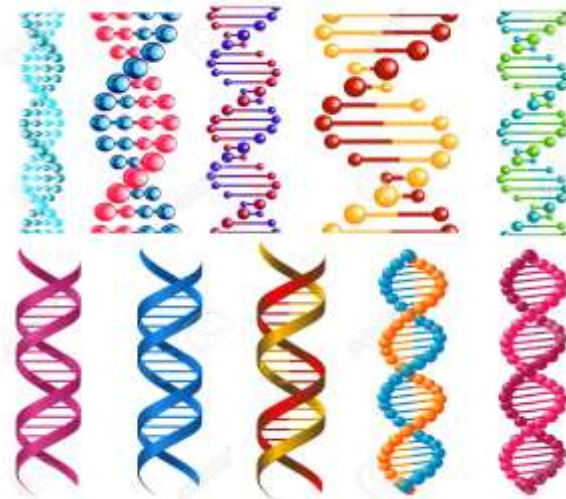
Tuesday 4b in
F16

See Miss
Stewart for
more details!



What Are Patterns?

Is the natural world just a series of patterns?



$$H(t)|\psi(t)\rangle = i\hbar \frac{\partial}{\partial t} |\psi(t)\rangle$$

For more details visit the Challenge and More Able GC or page on the SMCC website:

<https://sites.google.com/stmichaelscollege.org.uk/challengeandmoreable/home>

<https://classroom.google.com/w/NTE0NDI5NzQwOTYx/t/all>



Brought to you
by Mr Toledo
and the MFL
Department

Impress me!

500 House Points

£50 Amazon Voucher

Any format you like:

eg. film, art, poem, dance, article, diagram, speech

Best entries will have thought about musical, artistic, mathematical and humanistic patterns, as well as those underpinning quantum physics.

All entries to Mr Magnoff by

Deadline Extended:

Friday 25th April 2025





PE Sports Clubs updated half term!



| | MONDAY | TUESDAY | WEDNESDAY | THURSDAY | FRIDAY |
|---------------|---|---|--|---------------------------------|--|
| MORNING CLUB | | YEAR 7-10 BASKETBALL SKILLS SESSIONS | | | BASKETBALL SKILLS SESSIONS |
| 4A LUNCH CLUB | KS3 BASKETBALL TRAINING BASKETBALL COURTS | RUNNING CLUB KS3 FUTSAL SPORTS HALL KS3 DODGEBALL SPORTS HALL | BADMINTON / TABLE TENNIS NO PE KIT NEEDED JUST TRAINERS! SPORTS HALL | KS3 OPEN BASKETBALL SPORTS HALL | KS3 GIRLS GET ACTIVE MAIN HALL NO PE KIT NEEDED! |
| 4B LUNCH CLUB | KS4/5 FOOTBALL TENNIS AND BADMINTON SPORTS HALL NO PE KIT NEEDED JUST TRAINERS! | KS4 JUST DANCE CLUB MAIN HALL NO PE KIT NEEDED! | KS4/5 BASKETBALL | | |
| AFTER SCHOOL | YEAR 7-10 GIRLS BASKETBALL SPORTS HALL TRAMPOLINING MAIN HALL YEAR 8/9 FOOTBALL ASTRO | GIRLS FOOTBALL ASTRO YEAR 7-10 BASKETBALL CLUB MAIN HALL | YEAR 7 FOOTBALL ASTRO | KS4/5 BASKETBALL SPORTS HALL | SIX FORM SPORTS |



Games Club

EVERY TUESDAY 4A
LUNCHTIME

G18





Maths Homework Club



Want to revise or be challenged with some Maths?



Want to complete your Maths homework?

Need help with a certain topic?



Open to all KS3
Every Tuesday 3:30pm – 4:30pm in G19



Homework Club

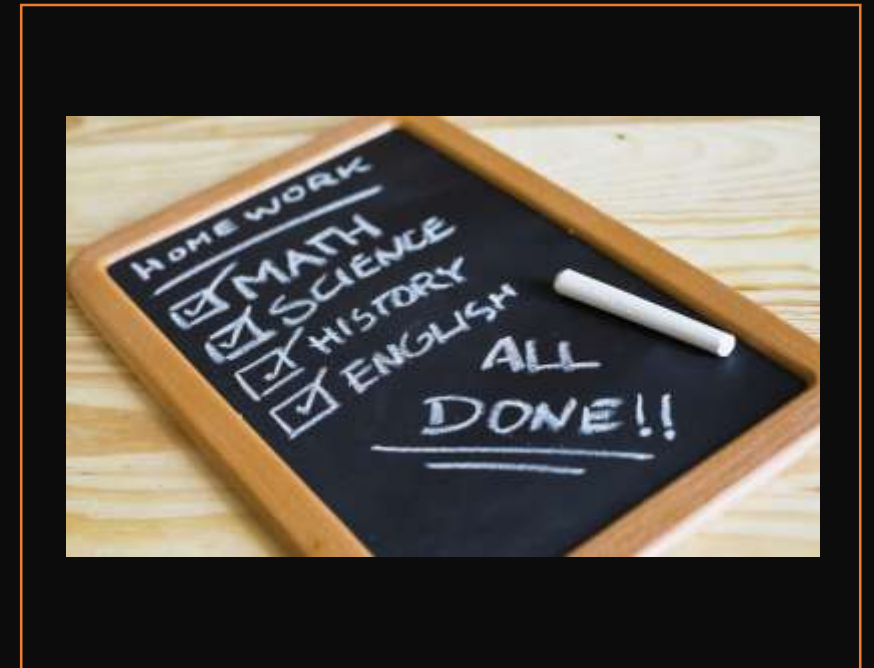
KS3 Homework club continues
this week in G20

7.30am – 8.30am

and

3.30pm – 4.30pm

Limited spaces available!





Maths GCSE Revision



Want to revise or be challenged with some Maths?



Want to complete your Maths homework?



Need help with a certain topic?



Open to all KS4
Every WEDNESDAY 4B LUNCH in the Library



Debate society: KS3

Enjoy, argue, learn

Challenge, speak, think



ROOM: S21

**Wednesday: 4a Lunch (second half of lunch from 12.45)
With Mr Devine & Mr Zanella**

Speak up!

Interesting topics!

Passionate about debating?

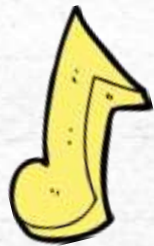


girls who CODE

**G19 Every
Monday from
3.30 -4.30pm**

girls who
CODE

**LEARN TO CODE AND
CHANGE THE WORLD**

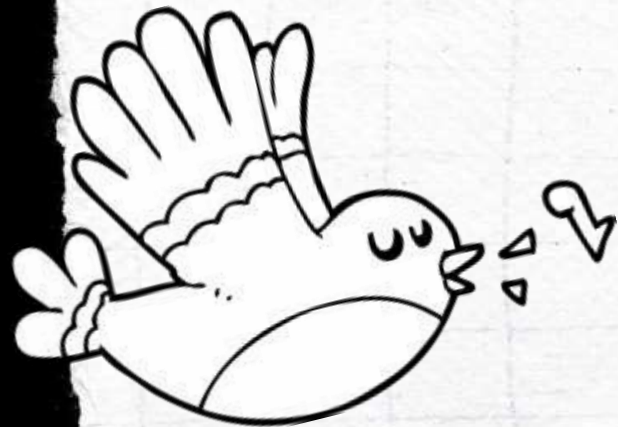


The St Michael's Gospel Choir

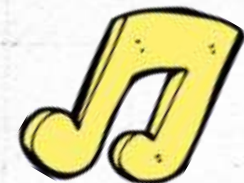


THURSDAY AFTER SCHOOL

3:30-4:30PM



See Mrs Laurence or Miss Casey to
discuss the chance of joining our new
liturgical choir collective;
open to all year groups.





Mass

8am

Friday mass will return on Friday 10th Jan
2025 with 8RU



Breakfast Club Reminder

Breakfast club is running from 8am every morning from the **main canteen!**

All students can get **free** porridge and/or toast +

Free fruit now available at the request of the Student Parliament





Year 11 Study Clubs

| | Monday | Tuesday | Wednesday | Thursday | Friday |
|---------------|---------------|----------------|------------------|-----------------|---------------|
| Week A | Science | History | RE | English | Options |
| Week B | Science | Geography | MFL | Maths | Options |

Study clubs return Monday 13th Jan with Week A



House Point Total as of 06/01/2025



Mazzarello –Points

Savio –Points

Da Costa –Points

Bosco –Points

Rua –Points

Vicuna –Points



St Michael's Catholic College
Chaplaincy Events Calendar 2024-2025



| <u>January 2025</u> | <u>February 2025</u> |
|---|---|
| <ul style="list-style-type: none">● Epiphany● Feast of Blessed Laura Vicuna● Feast of St John Bosco● House Dance Competition● Launch of Upcycle challenge (DT)● Holocaust memorial awareness House Competition● Racial Justice Sunday● Lunar New Year● Year 13 Retreat● Year 9 Retreat● Charity Week – BOSCO | <ul style="list-style-type: none">● Berlin (Yr12)● Brussels (Yr10)● LGBTQ+ History Month● Upcycle challenge presentation (DT)● Basketball House Competition● Lunar New Year● Safer Internet Day● CAFOD Family Fast Day● Ramadan Begins● Charity Week – VICUNA |



St Michael's Catholic College Chaplaincy Events Calendar 2024-2025



| <u>March 2025</u> | <u>April 2025</u> | <u>May 2025</u> | <u>June 2025</u> | <u>July 2025</u> | <u>To be scheduled</u> |
|---|--|---|---|---|--|
| <ul style="list-style-type: none"> ● Lent begins ● Shrove Tuesday ● Ash Wednesday ● Reconciliation services begin ● Feast of St David ● World Book Day ● Holi ● Purim ● World Poetry Day ● International Women's Day ● Feast of St Patrick ● Feast of St Oscar Romero ● Mothering Sunday ● Earth Hour ● Science Week ● Victims of Slavery and the transatlantic Slave Trade Assembly ● Lent Charity Friday's ● Easter Liturgy ● Eid al Fitr ● End of Term Awards Assemblies | <ul style="list-style-type: none"> ● Earth Day ● Stephen Lawrence Day ● Feast of St George ● Poetry by Heart House Competition ● Chess House Competition ● Cultural Exchange Project visit from Salesian Institute of Florence ● World Autism Awareness Day ● Passover begins ● Holy Week ● Easter Sunday ● Charity Week – SAVIO | <ul style="list-style-type: none"> ● Month of Mary ● Yr13 Reflection service ● Feast of St Dominic Savio ● Feast of St Mary Mazzarello ● Ascension ● Feast of Mary Help of Christian ● Indoor Rowing House Competition ● Cultural Exchange Project visit to Salesian Institute of Florence (Yr8) ● Eurovision House Competition ● Mental Health Awareness Week ● Feast of the Most Holy Trinity Sunday | <ul style="list-style-type: none"> ● Pride Month begins ● Pentecost ● Yr11 Reflection service ● Year 11 Prom ● Year 13 Leavers Event ● World Environment Day ● Corpus Christi ● World Refugee Day ● Feast of St Peter and St Paul ● Tug-of-war House Competition ● Shavuot (Jewish) ● Sports Awards Evening ● Islamic New Year ● Charity Week – MAZZARELLO | <ul style="list-style-type: none"> ● Rome Trip (Yr9) ● <u>Gilwell</u> Park Trip (Yr7) ● Showcase 2025 ● Yr10/12 Work Experience ● Careers and Enterprise Week ● Careers Fair ● Arts & Enrichment Week ● Sports Day 2025 ● Nelson Mandela Day ● International Day ● Summer School | <ul style="list-style-type: none"> ● CERN Trip (Science Yr12) TBC |



Remember to Recycle!

YES

- Waterbottles
- Biros + ink pens
- Cartons
- Highlighters + Markers
- Paper
- Correction fluid pots
- Card
- Rulers + Protractors
- Hot drink cups from the sixth form canteen (and the lid)
- Foil
- Staplers
- Crisp packets + Sweet wrappers
- Drinks cans
- Paperclips

NO

- Pencil shavings
- Ink cartridges from pens
- Tissues
- Pencils
- Rubbers
- Glue sticks

Recyclable Items Go In The Blue Bins!

Correct your food waste!

 YES 

- Bamboo Cutlery
- Sixth form food boxes
- Dairy + egg shells
- Meat, Fish and bones
- Fruit and vegetables
- Bread, Rice and Pasta
- Tea bags
- Coffee grounds

 NO 

- Packaging (plastic wrappers + bags)
- Liquids
- Oils
- General waste
- Metal Cutlery

St. Michael's Catholic College

College Prayer

Lord, thank you for the gift of this day
and the time to live and love in your
world.

May we be brought to the fullness of
life by the Salesian values taught to us
by St John Bosco.

We ask St. Michael our protector
to watch over us in our mission
to overcome evil with good.

Amen

St. Michael, **pray for us**
St. John Bosco, **pray for us**





Safeguarding Officers



**Designated
Safeguarding Lead:**

Ms Jo Nottage

Contact: 0207 237 6432 or
j.nottage@stmichaelscollege.org.uk



**Safeguarding officer &
Deputy Designated Lead:**

Mrs Debbie Freegard

Contact: 0207 237 6432 or
d.freegard@stmichaelscollege.org.uk



Safeguarding Officer:

Ms Tania Rughooputh

Contact: 0207 237 6432 or
t.rughooputh@stmichaelscollege.org.uk



Mr Allan Daly

Contact: 0207 237 6432 or
a.daly@stmichaelscollege.org.uk

Overall Responsibility:

Ms Felicity Corcoran - Principal

Contact: 0207 237 6432 or
Email: contact@stmichaelscollege.org.uk